

PLUM TREE

APARTMENT HOMES

1097 Maywood Lane
Martinez, CA 94553

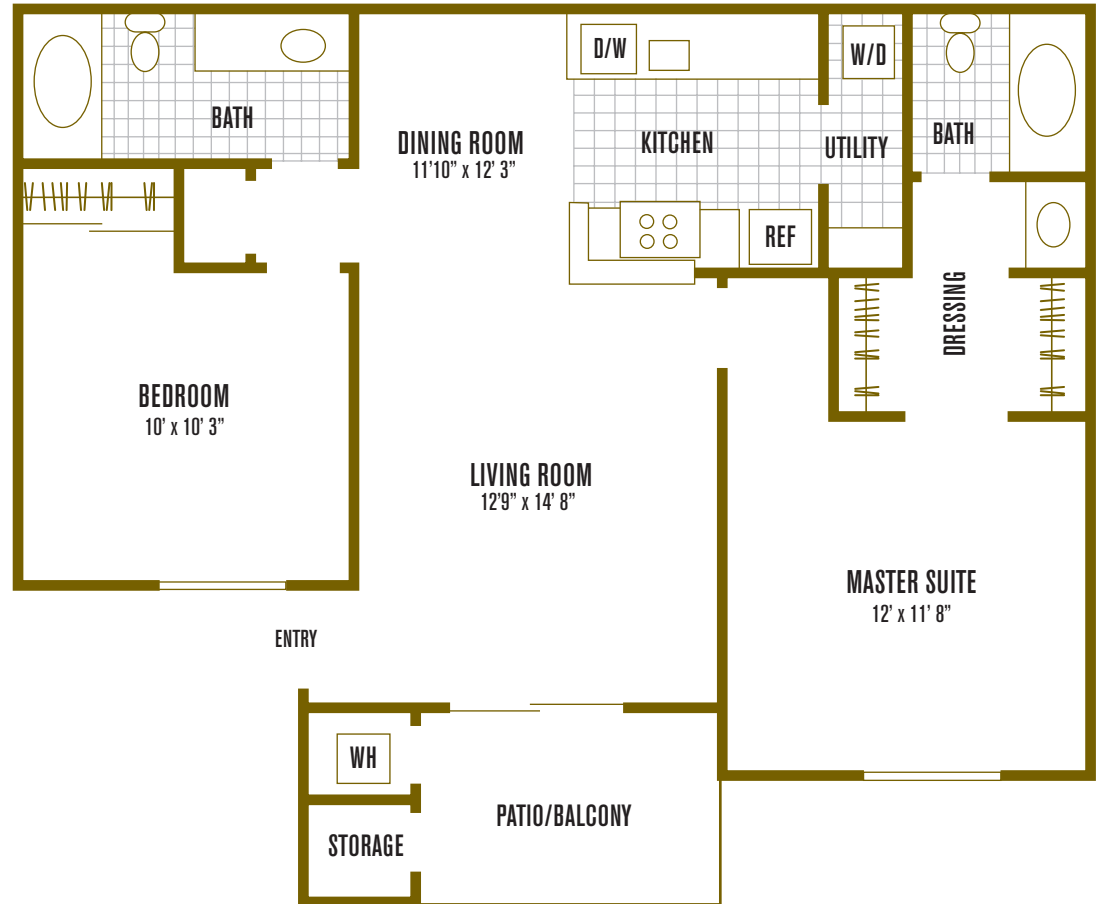
tel: 925.370.0300 | fax: 925.370.7177

www.ExperiencePlumTree.com

Clever, thoughtful design provides the master suite with additional privacy, while the gourmet kitchen, designer touches and convenient features combine to make this floorplan one of our most popular options.

residence 4

2 Bedrooms | 2 Bathrooms | 901 sq. ft.



notes: _____

All room dimensions and square footages are approximate.

